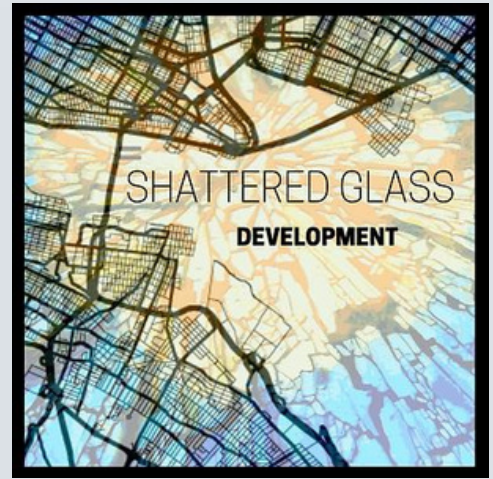


RESIDENTIAL DEVELOPMENT LAND

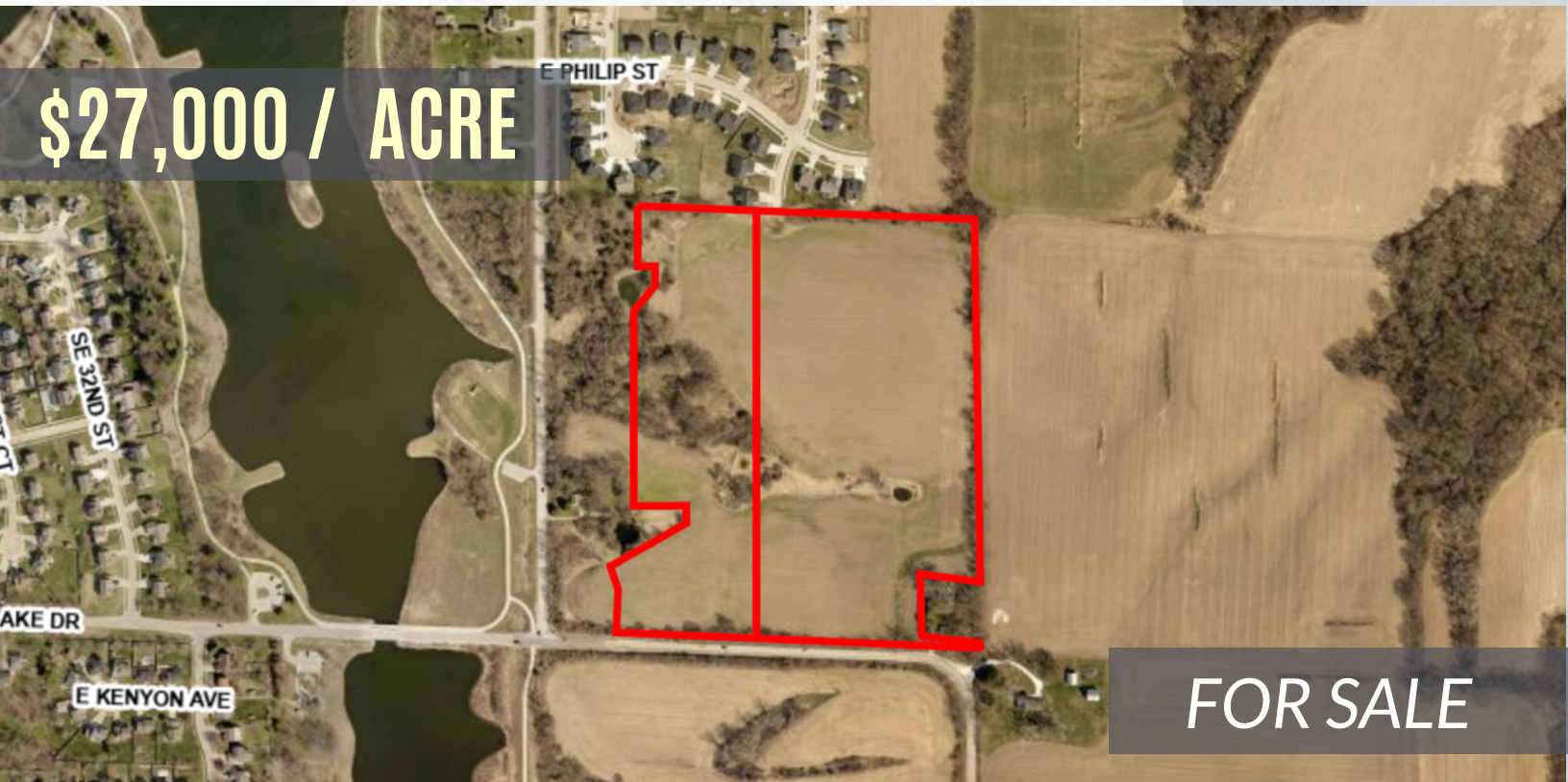
5079 & 3586 EASTER LAKE DR, DES MOINES IA

About the property:

Development land adjacent to beautiful Easter Lake available for sale with 29.83 acres. Two adjacent parcels overlook newly renovated Easter Lake Park. Featuring; a swimming beach, three playgrounds, 5.5 miles of paved trail, excellent fishing on land or boat, and a 178-acre lake as its centerpiece. Less than 5 miles from downtown and quick access to Highway 5 and 65. Current zoning is N2A allowing Single Family or up to 2 units per parcel.

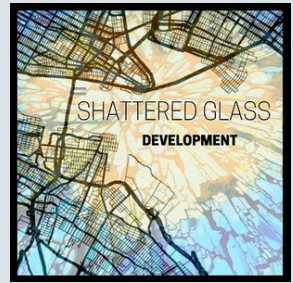


Jackie Johansen
Owner/Broker
(515) 277-0042



\$27,000 / ACRE

FOR SALE



EASTER LAKE IMPROVEMENTS

5079 & 3586 EASTER LAKE DR, DES MOINES IA



New Concessions & Rental Building



New Rowing Club Lake Facility & Storage



New Boat House & Adaptive Dock



Natural Playscape

Planned Improvements:

- New entrance and additional parking
- Rental dock and launch area
- Main arched walkway with donor benches
- New concessions and rental building
- Two new small picnic shelters
- Natural playscape area
- Additional accessible parking spaces
- Accessible kayak and canoe launch

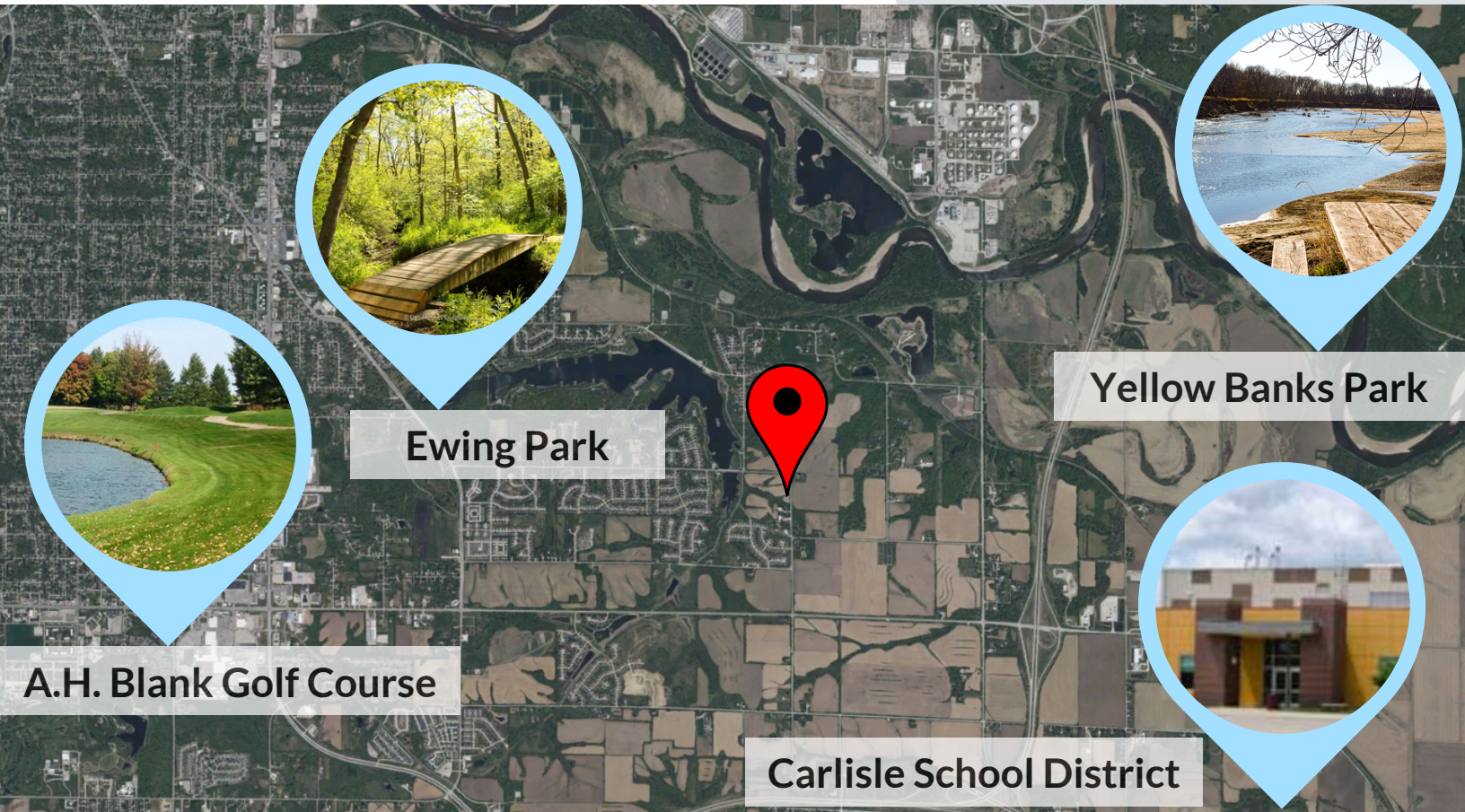
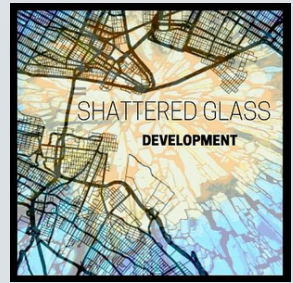
SHATTERED GLASS DEVELOPMENT

JACKIE JOHANSEN | (515) 277-0042 | SHATTEREDGLASSDEV.COM

LICENSED REAL ESTATE BROKERAGE IN THE STATE OF IOWA

AERIAL MAP

5079 & 3586 EASTER LAKE DR, DES MOINES IA



Ewing Park

Yellow Banks Park

A.H. Blank Golf Course

Carlisle School District

A.H. Blank Golf Course

- 11 minute drive from land (6.0mi)
- 31 minute bike ride from land (5.1mi)

Ewing Park

- 4 minute drive from land (2.2mi)
- 16 minute bike ride from land (2.9mi)

Yellow Banks Park

- 12 minute drive from land (8.7mi)
- 1hr 9 minute bike ride from land (13mi)

Carlisle School District

- This land is within the award winning Carlisle School District
- Bussing in available for students

SHATTERED GLASS DEVELOPMENT

JACKIE JOHANSEN | (515) 277-0042 | SHATTEREDGLASSDEV.COM
LICENSED REAL ESTATE BROKERAGE IN THE STATE OF IOWA